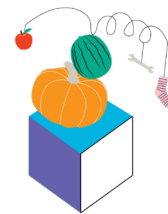


# Balancing 'Me' Sculptures



## Pre-Broadcast Introduction

- As a class discuss what 'Me, My Mind and My Imagination' means?
- Using the Mind Map resource, ask pupils to draw all the things about them, their dreams, challenges, inventions and things they like and dislike
- Explore and build 3D Brain Cap resource to understand the functions of the brain. This is an additional resource if you would like to extend the learning before or after the broadcast

## Preparation for Broadcast

Children will be working individually for this activity

- Prepare craft materials
- Pre-cut the wire roll into 55 cm pieces for every pupil

## Live Broadcast

KS1 workshops will take place from 9:15 to 10:30am (GMT)

- 9:15 - 9:25 - Introduction to Imagine Me, Imagine You with interactive Q&A
- 9:25 - 9:35 - Introduction to Balancing 'Me' Sculptures, exploration, and techniques
- 9:35 - 10:15 - Your class will experiment and create Balancing 'Me' Sculptures
- 10:15 - 10:30 - Show & Tell. Choose 2 pupils from your class to share their sculptures

KS2 workshops will take place from 13:30 to 14:45pm (GMT)

- 13:30 - 13:45 - Introduction to Imagine Me, Imagine You with interactive Q&A
- 13:45 - 13:55 - Introduction to Balancing 'Me' Sculptures, exploration, and techniques
- 13:55 - 14:35 - Your class will experiment and create Balancing 'Me' Sculptures
- 14:35 - 14:45 - Show & Tell. Choose 2 pupils from your class to share their sculptures